

# Equity Department



## Get to know us!

### Jeff Schierer

AVID Coordinator



You might see Jeff...

- Interacting with his AVID 12 class.
- Sharing strategies at a faculty meeting or hosting a PD session.
- Visiting AVID elementary and secondary classrooms to give feedback and support to students and teacher.
- Attending site team meetings at AVID buildings throughout the district.
- Encouraging others as we foster a Growth Mindset in our students and ourselves.
- Supporting and strengthening the District's Strategic Plan.

Contact Jeff about...

The AVID Elective class, assisting students with organizational needs, and incorporating WICOR strategies in your classroom or at your site.

Jeff.schierer@fsd145.org

815 232-0559

### Julie Niemann

AVID Coordinator



You might see Julie...

- Interacting with her AVID 8 class.
- Sharing strategies at a faculty meeting or hosting a PD session.
- Visiting AVID elementary and secondary classrooms to give feedback and support to students and teachers.
- Attending site team meetings at AVID buildings throughout the district.
- Encouraging others as we foster a Growth Mindset in our students and ourselves.
- Supporting and strengthening the District's Strategic Plan.

Contact Julie about...

The AVID Elective class, assisting students with organizational needs, and incorporating WICOR strategies in your classroom or at your site.

julie.niemann@fsd145.org

815-232-0340

### Nita White

Director of Equity and Curriculum



You might see Nita...

- Supervising all aspects of equity as it relates to: teaching, learning assessment and opportunities for students.
- Ensuring cultural competence for all district stakeholders.
- Supporting all schools with the implementation of PBIS.
- Supporting schools with the implementation of AVID.
- Supporting the ELL program, bi-culturalism and bi-literacy.
- Supporting and strengthening the District's Strategic Plan.

Contact Nita about...

- Anything related to equity, student learning and discipline, Office: 815-232-0321

You might see Laura...

- Assisting the Director of Equity, the Bilingual Coordinator, AVID Coordinators, and the Family Resource Coordinators.
- Attending the Equity Department meetings.
- Supporting our Bilingual parents and students.
- Supporting Teachers and Staff in meetings and testing.
- Supporting and strengthening the District's Strategic Plan.

Contact Laura about...

- Anything related to Equity Department and ELL- Bilingual Education. Office: 815-801-0111





## Ignacio Garza

Bilingual Coordinator



You might see Ignacio...

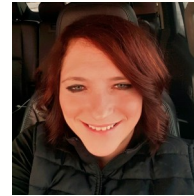
- Coordinating the Bilingual and ESL program for grades Pre-K—12.
- Meeting with ESL / Bilingual staff to evaluate student data and making data driven instructional decisions.
- Collaborating with the special education team by creating action plans that promote student growth.
- Establishing a strong base of rapport by interacting with students, parents and staff by being highly visible at all campuses and in the community.
- Extending communication beyond the school to parents, students, staff and community members by participating in and leading community events.
- Providing professional development opportunities that focus on best practices for English Learners.
- Supporting and strengthening the District's Strategic Plan.

Contact Ignacio about .....

- Anything related to Bilingual-ESL education.
- Office: 815-232-0115

## Tina Buske

Behavior Intervention Specialist & PBIS External Coach



You might see Tina....

- Observing students and classrooms in an effort to complete Functional Behavior Assessments and Behavior Intervention Plans for regular education students with severe behavior problems.
- Working closely to provide support to students, families, administration and staff.
- Providing staff development on mental health topics, classroom management and PBIS.
- Demonstrating and modeling "best practices" with identified classrooms.
- Providing individual and group direct service to students.
- Working closely with the Director of Equity and the MTSS Coordinator to insure the fidelity of the PBIS district-wide.
- Responding to crisis situations.
- Collaborating closely with the education team to coordinate interventions.
- Interacting with clinical staff and external resources such as school or community personnel.
- Supporting and strengthening the District's Strategic Plan.

Contact Tina about...

- Anything related to Regular education student behaviors or classroom concerns, PBIS questions;

## Jessica Larson

MTSS Coordinator



You might see Jessica...

- Coordinating district efforts to provide high quality instruction and interventions for academic and behavior that are matched to student needs.
- Monitoring students' progress frequently to make decisions about changes in instruction or goals.
- Ensuring fidelity of building level MTSS meetings that include continual application of a structured problem solving process that involves staff, families and support services
- Ensuring implementation of evidence-based behavioral practices.
- Compiling academic and behavioral data.
- Establishing written policies, practices and implementation plans.
- Providing necessary training of MTSS policies and practice to staff.
- Maintaining a system of communication between students, staff and families.
- Supporting and strengthening the District's Strategic Plan.

Contact Jessica about...

- Anything related to behavioral and/or academic interventions and supports.
- Office: 815-801-0127